



## FOBA C.0303

*FOBA's compact and proven laser for everyone*

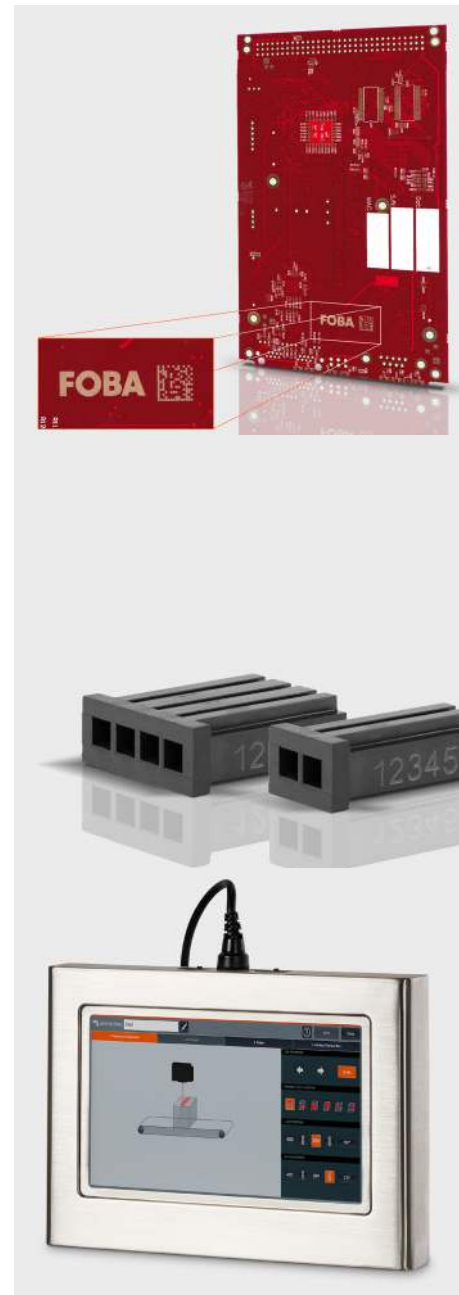
Laser marking with advanced CO<sub>2</sub> laser technology has never been so affordable and efficient: The 30-watt FOBA C.0303, the latest addition to our proven line of reliable CO<sub>2</sub> marking lasers, eliminates the trade-off between quality and cost and creates affordable, high-quality laser marking for everyone.

The C.0303 is characterised by a simple design and an easy-to-use user interface. The compact one-box design ensures quick and seamless integration into production lines, while the intuitive FOBA Go user interface is easy to use with minimal training.

With a laser power of 30 watts, the FOBA C.0303 is ideal for simple marking applications, particularly in the electronics and automotive supply industries. Applications include the marking of plastics, resins, glass, ceramics and organic materials such as wood, paper and cardboard.

### Your product benefits

- **It is the mixture that makes it special:** even as an entry-level laser, the C.0303 makes no compromises and combines proven quality, ease of use and a small footprint at an affordable price.
- **High availability guarantees short downtimes:** The reliable C.0303 impresses with its simple maintenance and fast changeover times. This quickly leads to savings of around 30 hours of production time per year.
- **Super compact and super easy to use:** The compact one-box design ensures uncomplicated line integration and the easy-to-use FOBA Go web-based user interface enables simple labelling.



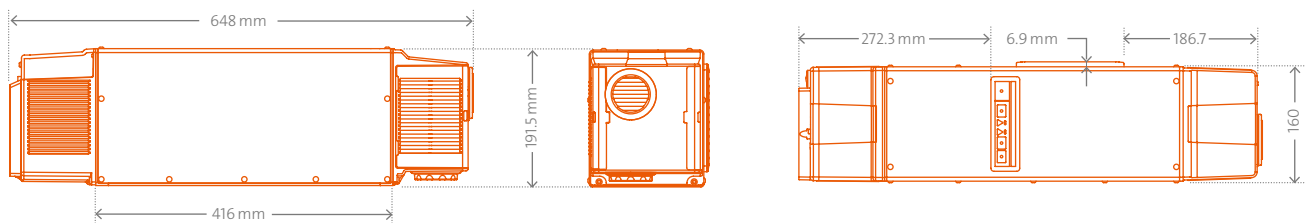


TECHNICAL DATA → C.0303

Marking features	
Lasertype	Sealed CO <sub>2</sub> laser, 30 watts, wavelength 9.3/10.2 and 10.6 µm, laser class 4 (IEC 60825-1)
Focussing optics	Three focussing optics (f = 100 / 150 / 200 mm)
Markingfield size*	Three sizes between f = 100 mm (FobaGO 36 x 57 mm²) and f = 200 mm (FobaGO 72 x 115 mm²)
Marking speed*	Up to 1,300 characters/s or 6 m/s (360 m/min)
Interfaces	Ethernet (TCP/IP), inputs for encoders and product detector triggers; 9 inputs/5 outputs in addition to the machine/operator interlocks
Software	Browser-enabled FOBA Go touch control software (optional for FOBA Touch Display)
Supply	
Electrical requirement	L/N/PE 100 - 120 VAC, 200 - 240 VAC, 50/60 Hz   Power consumption: maximum 700 watts
Protection classes   Cooling	IP 54   Air-cooled
Temperature   Humidity	5 - 40°C   20 % - 90 %, non-condensing
Weight	19 kg
Markable formats	

- Standard industrial fonts (Type 1 Windows® TrueType®) and single-line fonts
- Machine-readable codes (OCR, 2D matrix, etc.)
- Barcodes: BC25, BC251, BC39, BC128, GS1-128, EAN13, UPC\_A, RSS14, RSS14 Truncated, RSS14 Stacked, RSS14 Stacked Omnidirectional, RSS Limited, RSS Expanded, etc.
- Graphics, logos, symbols, etc.
- Linear, circular, angular, backwards, rotating
- Consecutive and batch numbering
- Automatic date, level and time coding; real-time clock
- Dot mode enables faster labelling of 2D codes than the conventional raster mode
- Standard industrial fonts (Type 1 Windows® TrueType®) and single-line fonts

TECHNICAL DRAWING → C.0303



ALLTEC Angewandte Laserlicht Technologie GmbH  
FOBA Laser Marking + Engraving  
An der Trave 27-31  
23923 Selmsdorf | Germany  
T +49 38823 55-556 | F +49 38823 55-222  
info@fobalaser.com | www.fobalaser.com/de

